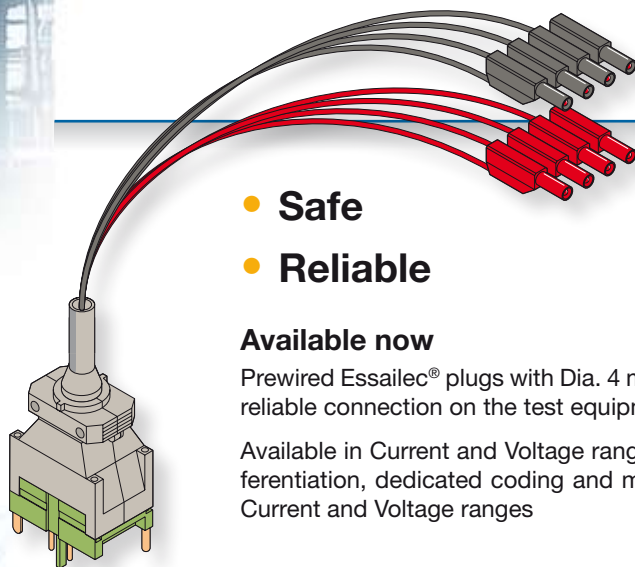


New prewired plug assemblies with IP20 Dia. 4 mm (.157") test plugs



according to the latest standards

- Safe
- Reliable

Available now

Prewired Essailec® plugs with Dia. 4 mm (.157") isolated test plugs for safe and reliable connection on the test equipment side.

Available in Current and Voltage ranges, in 2 m (.078") length. With colour differentiation, dedicated coding and marking for perfect identification between Current and Voltage ranges

Applications

In current and voltage transformers secondary circuits for safe and reliable :

- Protection relays testing in control relay panel
- Meters control and calibration
- Data acquisition for network analysis

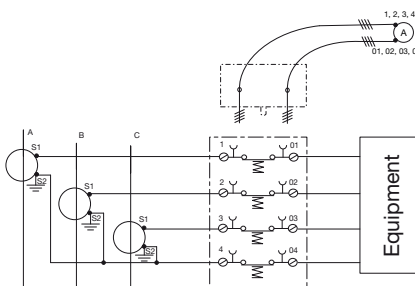
With Essailec®, benefit from more than 30 years of experience and successful implementations with major worldwide utilities and OEMs.

Benefits

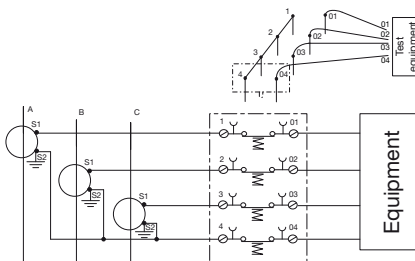
In CT secondary circuits, very high induced voltages are generated if the CT secondary circuits are opened. Equipment and users are then in danger (electrical shocks).

With Essailec®, safely and simply insert the prewired plug in the socket:

- Plug and play for measuring operations with the new COR-C-4 or COR-C-1. Automatic "Make before break" sequence, no cursor or screws to operate.



- Plug and play for short circuiting operations with the new COR-C-5 or COR-C-2 with inner shorting links. No short circuiting bridge to operate.



In VT secondary circuits, Essailec® is well appreciated in switchgears applications for its simple testing procedure: plug and play operation with the new COR-T-5 or COR-T-4-4 Essailec® prewired plugs.



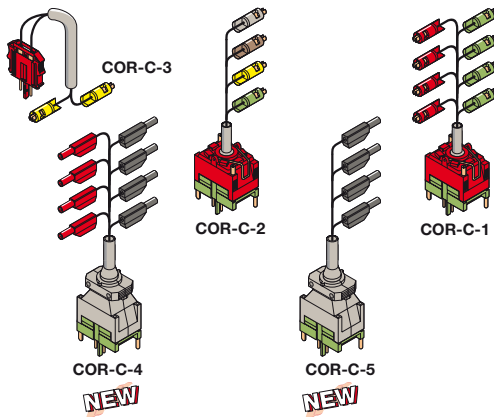
Characteristics

- 2 m (.078") length
- 2.5 mm² (12 AWG) wire section
- Gold plated contact in Current range for low current measurement (meters control and calibration)

Current range

Technical data

	IEC 947-1
Rated voltage	400 V
Impulse withstand voltage	4 kV
Pollution degree	3
Rated current	15 A
Short-circuit current	100 A / 5 s - 200 A / 1 s



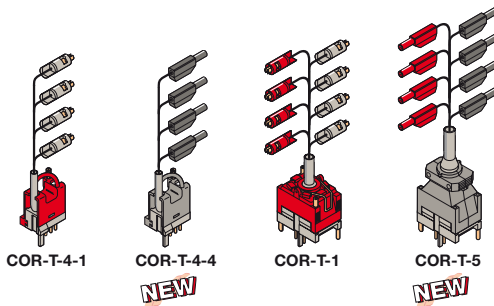
Ordering details

Description	Type	Order code	Pack ^(mg) pieces	Weight kg (1 pce)
Prewired plugs (precoded: 6.6)				
2 poles prewired plug made of:				
1 plug 2 poles	Red ■ FIC-2/1-1	COR-C-3	1SNA 166 643 R0200	1
2 bayonet security test plugs	Yellow ■ FCB..			
2x4 poles prewired plug made of:				
1 plug 2x4 poles	Green ■ FIC-2/4-1	COR-C-1	1SNA 166 638 R0500	1
4 bayonet security test plugs	Green ■ FCB..			0.87
4 bayonet security test plugs	Red ■ FCB..			
2x4 poles prewired plug made of:				
1 plug 2x4 poles	Green ■ FIC-2/4-2	COR-C-4	1SNA 167 932 R1500	1
4 x Ø 4 mm (.157") test plugs	Black ■ FC4-5			0.87
4 x Ø 4 mm (.157") test plugs	Red ■ FC4-4			
2x4 poles prewired plug for injection made of:				
1 plug 2x4 poles	Green ■ FIC-2/4-1	COR-C-2	1SNA 166 778 R1100	1
with 4 short circuited pins (1-2-3-4)				0.47
1 bayonet security test plug	Green ■ FCB..			
1 bayonet security test plug	Grey ■ FCB..			
1 bayonet security test plug	Brown ■ FCB..			
1 bayonet security test plug	Yellow ■ FCB..			
2x4 poles prewired plug for injection made of:				
1 plug 2x4 poles	Green ■ FIC-2/4-2	COR-C-5	1SNA 167 934 R1700	1
with 4 short circuited pins (1-2-3-4)				0.47
4 x Ø 4 mm (.157") test plugs	Black ■ FC4-5			

Voltage range

Technical data

	IEC 947-1
Rated voltage	400 V
Impulse withstand voltage	4 kV
Pollution degree	3
Rated current	8 A
Short-circuit current	25 A / 5 s - 800 A / 25 ms



Ordering details

Description	Type	Order code	Pack ^(mg) pieces	Weight kg (1 pce)
Prewired plugs				
4 poles prewired plug made of:				
1 plug 4 poles	Grey □ FIT-1/4-D	COR-T-4-1	1SNA 166 640 R1300	1
4 bayonet security test plugs	Grey □ FCB..			
4 poles prewired plug made of:				
1 plug 4 poles	Grey □ FIT-1/4-D	COR-T-4-4	1SNA 167 935 R1000	1
4 x Ø 4 mm (.157") test plugs	Black ■ FC4-5			
2x4 poles prewired plug made of:				
1 plug 2x4 poles	Grey □ FIT-2/4-1	COR-T-1	1SNA 166 639 R0600	1
4 bayonet security test plugs	Red ■ FCB..			0.87
4 bayonet security test plugs	Grey □ FCB..			
2x4 poles prewired plug made of:				
1 plug 2x4 poles (precoded: 2.2)	Grey □ FIT-2/4-2	COR-T-5	1SNA 167 933 R1600	1
4 x Ø 4 mm (.157") test plugs	Black ■ FC4-5			0.87
4 x Ø 4 mm (.157") test plugs	Red ■ FC4-4			

Caution: the prewired test leads must be connected to the test equipment prior to the insertion of the Essalec® prewired plug on the socket.



ABB France

Automation Products Division
Export Department
10, rue Ampère Z.I. - B.P. 114
F-69685 Chassieu cedex / France
Tel. : +33 (0)4 7222 1722
Fax : +33 (0)4 7222 1935