

Quick, Efficient Controller Setup with Data-Logging Capabilities

Searching for a quick, efficient way to set up your controllers? Need flexible, easy-to-use data-logging and graphing capabilities? We have the answer: WATVIEW.

WATVIEW is Watlow's Human/Machine Interface (HMI) software designed to set up and monitor one or more Watlow® controllers. With easy controller setup, a recipe and alarm manager, data-logging and trend plot graphing capabilities, animated custom overview screens and a superior online help system, you can be assured that WATVIEW is the ideal software for your application.

WATVIEW is available in three editions:

- **Run-Time Edition**—for operating controllers
- **Developer Edition**—creates custom screens
- **Configurator Edition**—available free of charge for setting up controllers at www.watlow.com

Note: See the Edition Comparison Table for details about which features are in each edition.

Features and Benefits

Easy program setup

- Scans all available communications ports and baud rates for supported controllers
- Detects which controllers are connected to the computer
- Automatically configures with appropriate setup screens and help files for detected controllers

Controller specific setup and spreadsheet overview screens

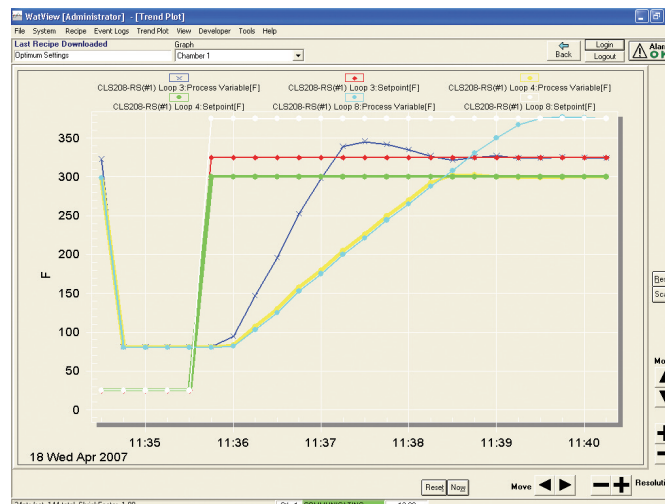
- Simplify monitoring and adjusting controller parameters
- Display settings for multiple channels and controllers
- Present parameters according to controller's menus

Recipe manager

- Stores commonly used controller settings
- Speeds up repetitive controller setups
- Backs up "snapshot" of your settings against data loss

Calendar-start function

- Automates processes by downloading recipes automatically in a one-time or repeating schedule



Alarm Manager

- Makes alarms easier to understand with customizable, plain text messages
- Aids in troubleshooting by time stamping and logging alarms
- Streamlines alarm management by allowing monitoring, acknowledging and clearing alarms for multiple controllers

Data-logging and trend plot graphs

- Reduce labor and increase accuracy by automating data collection for the parameters you choose
- Save time by exporting data to Excel®-compatible spreadsheet files
- Simplify process adjustments and troubleshooting by graphing up to 20 data items together on a graph
- Provide flexibility by allowing users to name, save and choose for display from any number of graphs

Colorful, animated custom overview screens

- Reduce errors by making displays specific for the application
- Decrease training time and simplify operation by making screens intuitive with digital photos and even animations
- Speed commissioning with simple custom screen editing

Webserver for Windows® XP Professional with Microsoft® Personal Webserver

- Improves access for supervisors by displaying data and graphs remotely in a standard browser
- Reduces maintenance and repair downtime by allowing remote access
- Increases utilization by allowing remote monitoring of usage
- Maintains security with password-protection of changing controller settings

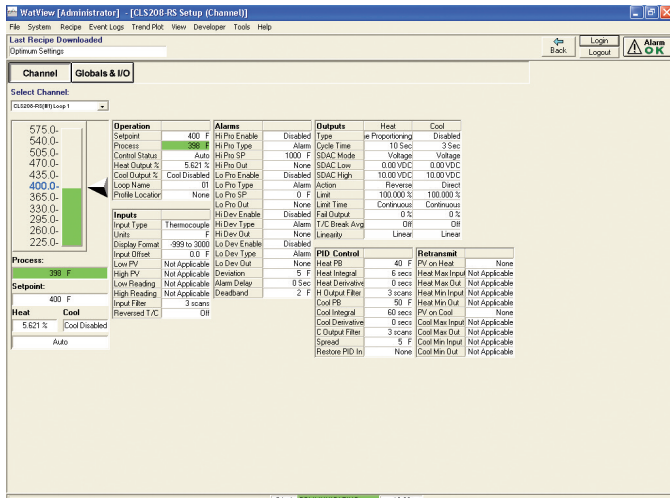


ISO 9001



Registered Company
Winona, Minnesota USA

WIN-WTW-1009



Setup screens make it easy to configure controllers.

Edition Comparison Table

	Developer	Runtime	Configurator
Process Monitoring Features			
Spreadsheet overview	Yes	Yes	Yes
Controller setup screens	Yes	Yes	Yes
Viewing custom screens	Yes	Yes	Yes
Alarm management	Yes	Yes	
Creating and editing custom screens	Yes		
Editing user variables	Yes		
Process Management and Documenting Features			
Editing and downloading recipes	Yes	Yes	Yes
Calendar-based, automatic recipe start	Yes	Yes	
Event logging	Yes	Yes	
Data logging	Yes	Yes	
Trend plot graphing	Yes	Yes	
Utility Features			
Multiple-controller support	Yes	Yes	Yes
Communications diagnostics	Yes	Yes	Yes
Password security	Yes	Yes	Yes
Customizable parameter names	Yes	Yes	Yes
Online help	Yes	Yes	Yes
Active X (OLE 2.0) support	Yes	Yes	Yes
Personal webserver compatibility	Yes	Yes	Yes

Watlow® is a registered trademark of Watlow Electric Manufacturing Company.
 Excel® is a registered trademark of Microsoft Corporation.
 Windows® is a registered trademark of Microsoft Corporation.
 Microsoft® is a registered trademark of Microsoft Corporation.

Ordering Information

WV00 - 0 0 - 0000

Edition _____
 D = Developer
 R = Runtime
 Key Type _____
 P = Parallel Port (LPT)
 U = USB

Specifications

Windows® XP System Requirements:

- RAM: 128 MB
- 800 x 600 screen resolution
- 16-bit or higher color palette ("High Color")
- Serial communications (COM) or ethernet port
- Microsoft® compatible pointing device (mouse or trackball)
- Parallel or USB port
- 200 MB hard drive space
- CD-ROM drive or Internet connection (for installation only)

Controllers Supported:

WATVIEW supports the following controllers when equipped with the listed firmware revision or later:

- CAS200 (Rev. 2.0)
- CLS200 SERIES standard, enhanced, and extruder (Rev. 3.31), ramp and soak (Rev. 3.40)
- CPC400 SERIES (Rev. 1.00)
- F4S/F4D (Rev. 2.06), F4P (3.00)
- MICRODIN™ (Rev. 1.01)
- MLS300 SERIES standard, enhanced, and extruder (Rev. 3.31), ramp and soak (Rev. 3.40)
- POWER SERIES (Rev. 1.00)
- SERIES 96 (Rev. 1.20)
- SERIES 96 with ramping (Rev. 1.05)
- SERIES 97 (Rev. 1.10)
- SERIES SD controller (Rev. 4.00), profiling (Rev. 1.00), single-display controller (Rev. 2.00), limit (Rev. 2.00)

Note: See www.watlow.com/products/software/watview.cfm for the latest on supported controllers, to download the latest version or get a free copy of the WATVIEW Configurator edition.

Your Authorized Watlow Distributor Is:

To be automatically connected to the nearest North American Technical Sales Office:
1-800-WATLOW2 • www.watlow.com • info@watlow.com

International Technical Sales Offices: Australia, +61-3-9335-6449 • China, +86-21-3381-0188 • France, +33 1 4132 7970
 Germany, +49 (0) 7253-9400-0 • Italy, +39 (0) 2 458-8841 • Japan, +81-3-3518-6630 • Korea, +82-2-2628-5770
 Malaysia, +60-3-8076-8745 • Mexico, +52 (442) 217-6235 • Singapore, +65-6773-9488 • Spain, +34 91 675 1292
 Taiwan, +886-7-288-5168 • United Kingdom, +44 (0) 115-964-0777